

I have

START

Who has
seeds?

©tekst og illustrationer skolelærerlife.dk

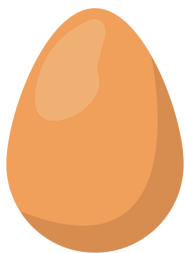
I have



Who has
an egg?

©tekst og illustrationer skolelærerlife.dk

I have



Who has
a chick?

©tekst og illustrationer skolelærerlife.dk

I have



Who has
a feather?

©tekst og illustrationer skolelærerlife.dk

I have/Who has?

EASTER

@skolel@rerlife.dk



I have/Who has?

EASTER

@skolel@rerlife.dk



I have/Who has?

EASTER

@skolel@rerlife.dk



I have/Who has?

EASTER

@skolel@rerlife.dk



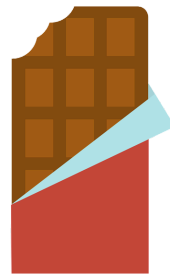
I have



Who has
chocolate?

©tekst og illustrationer skolelærerlife.dk

I have



Who has
Easter eggs?

©tekst og illustrationer skolelærerlife.dk

I have



Who has
a basket?

©tekst og illustrationer skolelærerlife.dk

I have



Who has
an Easter
Bunny?

©tekst og illustrationer skolelærerlife.dk

I have/Who has?

EASTER

@skolel@rerlife.dk



I have/Who has?

EASTER

@skolel@rerlife.dk



I have/Who has?

EASTER

@skolel@rerlife.dk



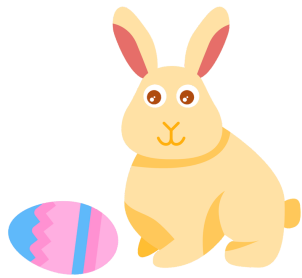
I have/Who has?

EASTER

@skolel@rerlife.dk



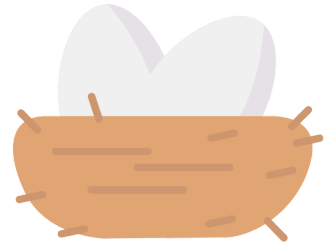
I have



Who has
a nest?

©tekst og illustrationer skolelærerlife.dk

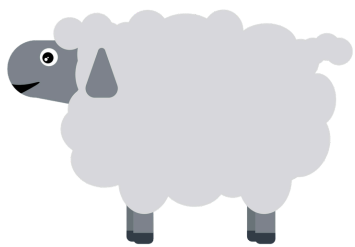
I have



Who has
a sheep?

©tekst og illustrationer skolelærerlife.dk

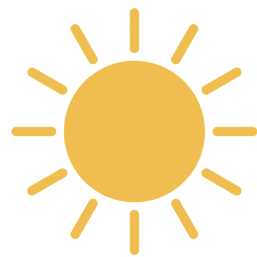
I have



Who has
a sun?

©tekst og illustrationer skolelærerlife.dk

I have



Who has
grass?

©tekst og illustrationer skolelærerlife.dk

I have/Who has?

EASTER

@skolel@rerlife.dk



I have/Who has?

EASTER

@skolel@rerlife.dk



I have/Who has?

EASTER

@skolel@rerlife.dk



I have/Who has?

EASTER

@skolel@rerlife.dk



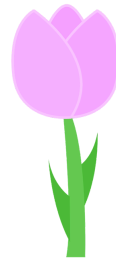
I have



Who has
a tulip?

©tekst og illustrationer skolelærerlife.dk

I have



Who has
clouds?

©tekst og illustrationer skolelærerlife.dk

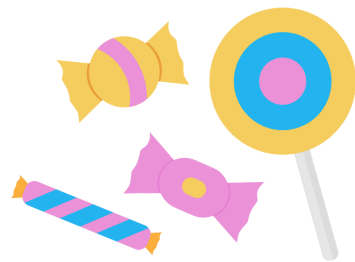
I have



Who has
candy?

©tekst og illustrationer skolelærerlife.dk

I have



Who has
a daffodil?

©tekst og illustrationer skolelærerlife.dk

I have/Who has?

EASTER

@skolelærerlife.dk



I have/Who has?

EASTER

@skolelærerlife.dk



I have/Who has?

EASTER

@skolelærerlife.dk



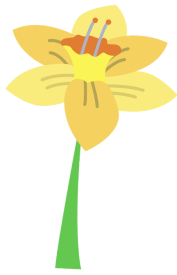
I have/Who has?

EASTER

@skolelærerlife.dk



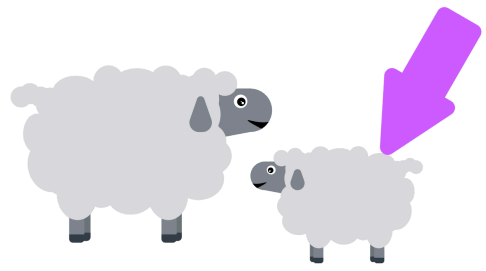
I have



Who has
a lamb?

©tekst og illustrationer skolelærerlife.dk

I have



Who has
an Easter egg
hunt?

©tekst og illustrationer skolelærerlife.dk

I have



Who has
a family?

©tekst og illustrationer skolelærerlife.dk

I have



Who has
April?

©tekst og illustrationer skolelærerlife.dk

I have/Who has?

EASTER

@skolel@rerlife.dk



I have/Who has?

EASTER

@skolel@rerlife.dk



I have/Who has?

EASTER

@skolel@rerlife.dk



I have/Who has?

EASTER

@skolel@rerlife.dk



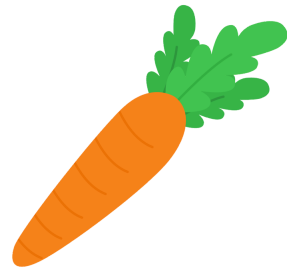
I have



Who has
a carrot?

©tekst og illustrationer skolelærerlife.dk

I have



Who has
an eggshell?

©tekst og illustrationer skolelærerlife.dk

I have



Who has
purple?

©tekst og illustrationer skolelærerlife.dk

I have



Who has
rain?

©tekst og illustrationer skolelærerlife.dk

I have/Who has?

EASTER

@skolel@rerlife.dk



I have/Who has?

EASTER

@skolel@rerlife.dk



I have/Who has?

EASTER

@skolel@rerlife.dk



I have/Who has?

EASTER

@skolel@rerlife.dk



I have



Who has
yellow?

©tekst og illustrationer skolelærerlife.dk

I have



THE END

©tekst og illustrationer skolelærerlife.dk

I have/Who has?

EASTER

@skolel@rerlife.dk



I have/Who has?

EASTER

@skolel@rerlife.dk



I have/Who has?

EASTER

@skolel@rerlife.dk



I have/Who has?

EASTER

@skolel@rerlife.dk

